

# Heartline

Keeping in touch with the heart of the Richfield United Methodist Church faith community.

2025  
November / December



**Advent Movie  
Matinees**  
Page 3

**Time for LIFE**  
Nov. 11 & Dec. 9  
Page 6

**Youth and Children**  
Page 9

**United Women in  
Faith**  
Page 10

**Advent Study with  
Bishop Plambeck**  
Page 12

**Hand-Only CPR/AED  
Refresher Training  
Session**  
Page 14

**Poinsettia Donation  
Form**  
Page 16

## Special Series in November PONDER, PREPARE, AND PRAY: OUR LAST EARTHLY STEPS

Sundays in November at 10:45 am

Death is a natural part of life. As a church, we value pondering the ends of our lives, preparing now to help our loved ones later, and praying for God to be with us the entire way. You're invited to come to these in-person events and bring a friend for these sensitive, yet important, life topics. Please see page 3 for details of each Sunday's event.



### ADVENT WORSHIP SERIES: "NEVER BETTER THAN AT CHRISTMAS" Nov. 30 - Dec. 21, 2025

Our hearts can grow in the love of God every day, and never better than at Christmas.

### ONE CHRISTMAS EVE WORSHIP SERVICE AT 4:00 PM

Christmas Eve falls on a Wednesday and we have one service at 4:00 pm featuring Time with Children, prayer and preaching, music by organ, choir, strings, "Silent Night" sung by candlelight, and our wonderful stained glass windows all lit up. Mark your calendar and invite your friends and family.

## NATE NOTE



Friends, please allow me to name a tough reality: reality is tough.

This fall, when I ask people in the church how they are doing, one of the first things many people lift up rather quickly goes something like this: “It’s hard to watch the news right now.” They go on to mention the things happening in the world that they find upsetting, unjust, or outright antithetical to the gospel of Jesus Christ.

Many of your fellow church members are still reeling from the shooting that claimed the lives of children and injured dozens more at our neighbor, Annunciation Church, as well as shootings at Minneapolis homeless encampments, and the murders of State Rep. Melissa and Mark Hortman and the attempted assassination of State Sen. John and Yvette Hoffman. Many are appalled by the rise in ICE raids across the nation and Minnesota that tear up families with draconian, violent tactics common for violent felony cases now used to address what are civil violations. Some are upset that leaders in the spotlight are actively downplaying mercy and condemning empathy while so many suffer economically, physically, and mentally.

These are just a samplings of the “tough reality news” that many of you have articulated to me in recent weeks. Collectively, this church has expressed its concerned about the state of the world, the state of the nation, the state of religion. And, I might add, the multiple paths it will take to bring real, systemic, meaningful change for all three. With all of this and more, there is an overwhelming urge to give in to feeling overwhelmed.

I have been thinking of this and praying over this as we conclude a worship series focused on the Beatitudes and as we look forward to a season of Advent and Christmas.

When Jesus began his Sermon on the Mount with these bold declarations - blessed are the poor in spirit, the mourning, the meek, the hungry and thirsty for righteousness, the merciful, the pure in heart, the peacemakers, and the persecuted - he made it clear: the world may dismiss these souls, the world may ignore or even condemn these souls. But these souls are *first* in God’s sight. They are who God wants us to see first. When we watch the tough reality of the news or what’s happening right

outside our front door, I urge you to see these people first. To bear witness to their stories. To stand up with them and for them in all of the ways you can. Make Jesus’s boldness your boldness. Seeing God through tough reality is not easy in of itself. But it is also what Jesus taught us to do.

The people of Jesus’s time and place lived under terrifying conditions. “Tough reality news” doesn’t begin to cover it. But they faced much of what we face now: a fear of violence, an abuse of authority tearing up families, and a seeming lack of care for the common good. They got through these times in the same way, as well: faith, hope, and love. Faith in God, hope in the community, and love through mutual support and care for one another. That is, in tough times, we hang tough.

That is how we change the state of the world, the nation, and religion: faith, hope, and love together.

We now move into Advent, a season awaiting the arrival of God on earth - of heaven on earth - in the form of the Christ child. May we remember the other half of these Beatitudes. In God’s blessing, we will find the kingdom of heaven, comfort, an inheritance of the earth, a fulfilling of righteousness, mercy, clear sight of God, a claimed identity as children of God, and the kingdom of heaven outshining the shadow of despair. As always, I am proud to be your pastor. Blessings to you all.

In Christ,  
Rev. Nate Melcher

## COFFEE WITH THE PASTOR

Sign up all fall and winter:  
[calendly.com/natemelcher](https://calendly.com/natemelcher)

Pastor Nate is meeting with church members like you to catch-up, reconnect, and pray. Sign up with the calendar link (if you cannot go online, please call the office) for a meeting at the church campus throughout the fall and winter. Let’s have a great cup of coffee and connect!

## PONDER, PREPARE, AND PRAY: OUR LAST EARTHLY STEPS

Sundays in November at 10:45 am

Death is a natural part of life. As a church, we value pondering the ends of our lives, preparing now to help our loved ones later, and praying for God to be with us the entire way. You're invited to come to these in-person events and bring a friend for these sensitive, yet important, life topics.

### TOUR: GILL BROTHERS FUNERAL CHAPEL Sunday, November 2 at 10:45 am Gill Brothers across the parking lot

Gill Brothers owner Dan McGraw will give us a tour of their facilities, including the reception area, chapel, and casket room. He'll take all of your questions and present information on funeral services, embalming, cremation, aquamation, "green burials," and natural organic reduction.

### WORKSHOP: MOVING THROUGH GRIEF Sunday, November 9 at 10:45 am Fellowship Hall

Grief is complex and often arrives on its own schedule. Join retired pastor Rev. Gloria Roach Thomas for a workshop on grief. How does it manifest, how do we manage it, and why hope in God is always just around the corner.

### WORKSHOP: FUNERAL PLANNING Sunday, November 16 at 10:45 am Fellowship Hall

Do your loved ones know your final wishes? The best time to prepare is today. Join retired pastor Rev. Wayne Albertson to create or review your funeral planning documents and/or end of life paperwork. If you haven't done this before, or you haven't reviewed yours in a few years, now is the time.

### GUEST SPEAKER: OAK HILL CEMETERY Sunday, November 23 at 10:45 am Fellowship Hall

Oak Hill Cemetery curator David Peterson will cross the street to offer information on both Oak Hill and cemeteries in general. Learn about interment options, how vaults and markers work, and how you can prepare now so your loved ones know your intentions.



## ADVENT MOVIE MATINEES: "A CHRISTMAS CAROL"

Sunday, Nov. 30, Dec. 7, and Dec. 14  
at 10:45 am, Fellowship Hall

Pastor Nate's Advent sermons are inspired by scripture and *A Christmas Carol* by Charles Dickens. You're invited to watch:

**November 30** | *A Christmas Carol*  
(George C. Scott, 1984, 1 hour, 41 minutes)

**December 7** | *A Christmas Carol*  
(Alistair Sim, 1951, 1 hour, 2 minutes)

**December 14** | *The Muppet Christmas Carol*  
(Michael Caine, Kermit the Frog, 1992, 1 hour, 25 minutes).

Yes, we have snacks! Please stay after worship to enjoy these classics.

## HOW TO INVITE A FRIEND TO WORSHIP

1. Mention a worship service in conversation. Share how you were moved by a favorite song, lit a candle for a conflux moment, or gained new insight into scripture through the sermon.
2. Ask what they find meaningful in their own worship experiences and listen intently.
3. Let them know if they want to join you (mention an upcoming special Sunday), you'd love to introduce them to your church friends. Share our website or YouTube channel.

80% of people report they would try a worship service if a friend invited them. Be brave! Invite!

**WINDOWS: A ONE-YEAR WORSHIP SERIES,  
SEPTEMBER 2025 - MAY 2026**



In 2025-2026, Richfield United Methodist Church begins a one-year worship series: **WINDOWS**. A window is a quiet paradox. It isn't a wall, yet defines boundary. It isn't a door, yet allows passage. Between the here and there, between stillness and movement, we find ourselves at God's threshold.

The **WINDOWS** worship series is framed by 7 miniseries that explore the seasons of our lives. We will open up to God's creative spark, reflect on how the teachings of Jesus can change the world, and keep shadow at bay so the light of the Holy Spirit can shine bright. All are welcome to grow in love of God and neighbor, reach new people, and heal a broken world through worship, prayer, spiritual practices, media and book studies, and gatherings big and small with friends new and old.

- |                                |   |
|--------------------------------|---|
| Windows on the World           | Delight as Jesus expands God's love through the Beatitudes.         |
| I Once Was Lost                | Weigh the many angles of the prism of grace and forgiveness.        |
| Never Better Than at Christmas | Allow the lessons of past, present, and future to warm your heart.  |
| Disturbing                     | Live a life that reflects the love of God to everyone you meet.     |
| Open Hearts, Minds, Doors      | Feel the Holy Spirit at work through a variety of experiences.      |
| Windows of Opportunity         | Journey through key moments in the life of Jesus leading to Easter. |
| Scandal!                       | Hear some of the most-challenging stories by Jesus in a new way.    |

Worship services feature a variety of Spirit-filled music, inclusive and justice-centered liturgy, meaningful interactive moments, and preaching that connects scripture with everyday life. You are invited to come and be part of a caring community on Sundays at 9:30 am in-person, online at [youtube.com/richfieldumc](https://youtube.com/richfieldumc), or by phone at 888-650-5835. Learn more: [richfieldumc.org/worship](https://richfieldumc.org/worship).

**Let us worship the God who loves all people. All are welcome, and all means all.**



**FALL WORSHIP SERIES #2: "I ONCE WAS LOST"  
November 2-23, 2025**

When you hold and turn a transparent prism, it refracts light in different angles, giving you fresh perspective. Likewise, life's stories have many angles, depending on your point of view. This series considers themes of grace, mercy, and forgiveness through the many lenses of the story often called "the parable of the prodigal and his brother." Hear many perspectives, and consider how one story can contain many truths.



**ADVENT WORSHIP SERIES: "NEVER BETTER THAN AT CHRISTMAS"  
Nov. 30 - Dec. 21, 2025**

There once was a gruff, greedy fellow who thought Christmas a humbug. He tried to dismiss it, but he quickly learned through lessons of the past, present, and future that Christmas can be special even for someone like him. Our hearts can grow in the love of God every day, and never better than at Christmas. This Advent, get familiar with scriptures and a classic story that has inspired people for generations.

**SAVE THE DATES:**

- |                        |  |
|------------------------|--|
| Saturday, November 01  | UWF Craft and Vendor Sale  |
| Sunday, November 02    | All Saints Sunday   Daylight Saving Time ends  |
| Sunday, November 23    | Charge Conference for the purpose of setting clergy compensation<br>4:00 pm-6:00 pm, Eden Prairie UMC, 15050 Scenic Heights Rd, Eden Prairie |
| Thursday November 27   | Happy Thanksgiving   Campus Closed   |
| Friday, November 28    | Campus Closed  |
| Sunday, December 07    | Richfield Symphonic Band Concert, 3:00 pm in the Sanctuary   |
| Sunday, December 14    | The Metropolitan Men's Choir Concert, 3:00 pm in the Sanctuary   |
| Sunday, December 21    | Service of Hope and Healing, 3:00 pm   |
| Wednesday, December 24 | Christmas Eve Worship Service, 4:00 pm   |
| Thursday, December 25  | Merry Christmas, Campus Closed   |
| Sunday, December 28    | Cereal Sunday  |

## ALL SAINTS' SUNDAY IS NOVEMBER 2

We will honor our dear departed friends for All Saints' Sunday. Prayerfully listen to the Roll Call of the Saints as the bell tolls in a peaceful moment of gratitude for the eternal love of God.

## CHRISTMAS SWEATER SUNDAY IS DECEMBER 14

Wear your favorite Christmas sweater to worship and join the fun! Whether your sweater is beautiful, silly, or "interesting," we want to see your sweater fashion sense as we enjoy the Christmas Pageant.



## MILESTONES & MIRACLES IS DECEMBER 21

Once a quarter, you're invited to share what you celebrate with your church. Whether it's your birthday, anniversary, a new job, retirement, or other significant milestone or miracle, this is a time to celebrate the joy God brings in our everyday lives together.

## LESSONS AND CAROLS & CHRISTMAS COOKIE PARTY ON DECEMBER 21

After the Lessons & Carols worship service, join your church community in Fellowship Hall for Christmas cookies! Bring a batch to share, try something new, and enjoy a cup of coffee with good friends. No meeting, no agenda - just good holiday cheer!

## A SERVICE OF HOPE & HEALING IS DECEMBER 21 AT 3:00 PM

The Christmas season can bring complex emotions of grief, loss, and other challenges. It's okay to feel our feelings. Come as you are for a Service of Hope and Healing filled with music, poetry, prayer, and ritual. Prepare your heart for the light of Christ with candlelight, and God's blessings to you.

## CHRISTMAS EVE WORSHIP SERVICE IS DECEMBER 24 AT 4:00 PM

Christmas Eve falls on a Wednesday and we have one service at 4:00 pm featuring Time with Children, prayer and preaching, music by organ, choir, and strings, and "Silent Night" sung by candlelight. Mark your calendar and invite your friends and family.

## CEREAL SUNDAY IS DECEMBER 28

Come for a music-filled worship service followed by cereal in the Commons. We'll have milk and a variety of cereals or bring one to share. Kids: wear your pajamas to worship! All are welcome to bring an unopened box of cereal to donate to VEAP Food Shelf.



## CHARGE CONFERENCE ON NOVEMBER 23

There is a Charge Conference at Eden Prairie UMC (15050 Scenic Heights Rd, Eden Prairie) on Sunday, November 23 at 4:00 pm to approve clergy compensation for 2026. Beginning this year, the Minnesota Annual Conference now holds District-based cluster conferences for worship, workshops, and the business of Charge Conferences. Ad Board members (voice and vote) will attend and church members (voice) are welcome to attend.

## FROM THE PARISH NURSE

Time for LIFE:  
Learning, Inspiration, and Fellowship Together



### November Time for LIFE

**Program:** "Travels to South Korea" with Pastor Nate

**Date:** Tuesday, November 11

**Time:** 1:00 - 2:00 pm with dessert to follow

**Cost:** \$5.00

**RSVP:** Sign up in the Commons or call the church office by Sunday, November 9



Pastor Nate will share photos, faith practices, and new and expanded stories from his cultural ministry exchange trip to South Korea earlier this year. Learn about national historic sites, life in the modern era, what Methodism is like in a different country, and what it's like when the border you share with your closest neighbor is a demilitarized zone. We'll have a selection of South Korean eats and treats to try, too. The fall sermon stories were just the beginning; come and experience more.

### December Time for LIFE

**Program:** Songs in the Holiday Spirit with QuintEssence

Featuring David Nyberg, RUMC Interim Choir Director, and Pastor Chris Kliesen Wehrman

**Date:** Tuesday, December 9

**Time:** Holiday luncheon at 12 Noon, and program from 1:00 - 2:00 pm

**Cost:** \$15.00 for lunch and program; \$5.00 for program only

**RSVP:** Sign up in the Commons or call the church office no later than Sunday, December 7

Join us as we welcome our Interim Choir Director, David Nyberg, Pastor Chris Kliesen Wehrman, along with their musical friends, to our special holiday Time for LIFE celebration! After a delicious lunch, we will experience the magic of the holiday season with QuintEssence! Rachel Bridges, Alan Husby, Kathy Webb, David, and Chris will bring warm vocal harmonies and exquisite piano and guitar stylings to a delightful blend of timeless Christmas classics and seasonal favorites. It's a performance that is sure to warm your heart and make you smile!





## PUB THEOLOGY

### First Sundays

7:00 pm-8:00 pm (in-person only)

Location: Pizza Lucé

(800 W 66th St, Richfield, MN 55423)

Fall Gatherings: Nov. 2, Dec. 7

Pub Theology is a drop-in discussion about faith, God, and life over a tasty beverage. Be part of the informal atmosphere and talk with people of many generations about faith questions big and small. Arrive early to order a tasty beverage and/or dinner, then stay for spirited conversation led by Pastor Nate. More information:

[richfieldumc.org/pubtheology](http://richfieldumc.org/pubtheology)



## NIGHT OWL BIBLE STUDY

Wednesdays at 9:00 pm

Online-Only by [Zoom](#) Meeting ID: 819 9039 0338 / Passcode: 5835 or call: (312) 626-6799

Busy days? Up late at night? This is the Bible study for you. Come for a welcoming, drop-in experience to read and discuss the upcoming scripture reading for worship with other night owls. No experience necessary, open to church members and neighbors from the community.

## UPCOMING CONCERTS AT RUMC



## RICHFIELD SYMPHONIC BAND HOLIDAY CONCERT

Sunday, December 7, 3:00 pm

Begin Advent with an inspired holiday concert from the Richfield Symphonic Band. Open to the public and featuring a variety of new and traditional holiday favorites, this concert for the whole family also features an organ piece presented by Sonja Gustafson. A freewill offering is split between the band and church, and there are treats following the show. Richfield Symphonic Band has shared the gift of music since 1979. Learn more at [rsband.org](http://rsband.org).



## METROPOLITAN MEN'S CHOIR CONCERT

Sunday, December 14, 3:00 pm

Come for a new tradition as the Metropolitan Men's Choir has their premiere concert at Richfield UMC. Filled with holiday favorites, new musical pieces, and reverent music for the season, you and your friends will delight with these powerful voices. A freewill offering is split between the choir and church. Learn more about this growing musical group: [metropolitanmenschoir.org](http://metropolitanmenschoir.org)

## A STEWARDSHIP THANK YOU AND CALL TO ACTION

Thank you to everyone who participated in stewardship season this fall. From speakers and writers, to staff and volunteers, from all who returned their annual giving commitments to all who are prayerfully discerning their commitments, we thank you. The church has resiliency when we all step up together, including in our financial generosity. As 2025 comes to a close, all are called to not just pray for growth and vitality of the church, but to actively get informed, get involved, and get invitational. We grow when *you* invest in *your* church. We can't do it without you; thank you.

## 172 DAYS OF PRAYER MOVEMENT

Everything we do begins in prayer. All church members and friends are called to pray for the future of Richfield UMC every day through Nov. 26, the day before Thanksgiving. Take a moment of silence, use our Breakthrough Prayer, or even speak one word with reverence: Thanks. Help. Peace. Thank you for taking part in this urgent, faithful solution for your church.

## BEATITUDES STAINED GLASS BOOKMARKS

The "Windows on the World" fall worship series is complete and now you can collect the entire set of 8 bookmarks of the stained glass windows that depict the Beatitudes from the Gospel of Matthew. Special thanks to Sarah Musgrave for her amazing photography!



## GET CONNECTED OCTOBER: LEARN, CONNECT, AND SHARE

The Get Connected October's Ministry Fair was full of celebration and excitement! It was a wonderful month of learning about the many valuable groups, activities, and ministries that we have in place at RUMC for folks to get connected, have fun, and make a difference in the lives of their fellow congregants and neighbors, both near and far.

Thank you to everyone who took the time after worship to walk around the ministry fair where you heard about the numerous ways you could be involved with your church community. And now that you have learned about these opportunities and connected with the representatives for them, we hope that you will consider joining one of the areas that drew your interest and share your gifts with others.

Also, a sincere thank you to the many church members who were asked to represent their specific group or ministry, Rexi Warner, Rhonda Olson, & Andi Olson for donating cookies, the Committee on Enhancing Connections and Building Community for their ongoing work on this mission (Brad Gardner, Kent Johnson, Kay Kurtz, Bryan Nelson-Phelan, Christie Neuger, Sandra Overland, and Barb Rogers), and Linda Schmidt, for her work on the many communication details needed for this special event month.

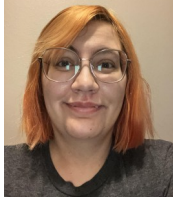
---

## CHURCH SAFETY ON-CAMPUS

**Be sure the door latches closed behind you when entering and exiting.** The main front doors are nearly always locked for the safety and security of those inside. When you visit campus during business hours, please use the Aiphone intercom system to gain entry. If someone tries to enter with you and you don't know them, it's okay to say, "Sorry, I don't know you. Please use the intercom." Please do not "piggyback" and enter with someone you don't know and please don't take offense if they tell you no. It takes all of us working together to keep the children of CFC safe, the staff and members safe, and the overall building secure. Thank you for your cooperation.

# Youth & Children

Becca Whitaker  
CYF Ministries Coordinator  
[bwhitaker@richfieldumc.org](mailto:bwhitaker@richfieldumc.org)



## CHILDREN'S MINISTRY UPDATE:

Sunday School is off to a great start this year! We are using our Whirl Bibles to learn stories and are doing a lot of coloring.

We will be starting work on the **Christmas pageant** in November, it's going to be a fun one with something for everyone to try! If you would like your child to participate, please email me at [bwhitaker@richfieldumc.org](mailto:bwhitaker@richfieldumc.org).

## YOUTH MINISTRY UPDATE:

Youth Group (6-12 Graders)  
1st and 3rd Wednesdays, 6:30pm-7:30pm,  
Grace Room

Youth Group continues in November and December. We gather to check-in and do fun activities like games, crafts, video discussion, faith talk, and more. Contact Becca at [bwhitaker@richfieldumc.org](mailto:bwhitaker@richfieldumc.org) for more information.

# Confirmation

Confirmation class continues with a great group of teens excited to learn more about their faith. This year the confirmation students will be helping out around the church in a variety of tasks, so be sure to say hi if you see them helping out.



CARING FOR CHILDREN

## CARING FOR CHILDREN Early Learning Center

As we welcome the end of our year at Caring for Children, we come together with gratitude and reflection as we focus on kindness, community and the warmth of gathering with loved ones. We wish you and your family the happiest of holidays and look forward to the coming New Year.

Kathy Newbauer  
Caring for Children Director



## HAPPY NOVEMBER AND DECEMBER BIRTHDAYS

### November

John Sells	02	Kate Koskey	17
Kathleen Clem	05	Beth Lindquist	19
Marj Wittenborg	05	Paula Wendt	21
Mitchell Wilson	06	Peyton Owens	28
Buerkley Owens	06	Sandra Overland	29
Grover Dodds	15		

### December

Lauren Gunderson	01	Merry Rendahl	24
Amanda Beardsley	02	Rhonda Olson	24
Sally Knutson	03	Nick Dewey	25
Knox Gaertner	04	Brennan Currie	26
Caroline Riley	06	Mary Kay Petersen	27
Suzann Tarvin	08	Steve Klosinski	28
Noah Dewey	10	Orlean Kovach	29
Andi Olson	12	Marilyn Dodge	30
Brantley Gaertner	19	Ryder Whitaker	31
Brenna Nelson-Phelan	22		

## AN EVERYDAY PRAYER LIFE IS FOR EVERYONE

May we devote time and energy to God and neighbor and pray every day for:

- People in need of a loving church home.
- Our church's journey toward vitality.
- The babies and toddlers who are cared for each weekday by CFC (Caring For Children, the early learning ministry at the church) and their families.

We pray in celebration.

We pray with gratitude.

We pray for those who grieve:

- The family and friends of Curt Stull who died on Sept. 28.

*Please join your church in praying the Breakthrough Prayer daily at 8:35.*

#### OUR BREAKTHROUGH PRAYER

Loving God of all,  
renew our hearts and minds.

Reveal your wildest dreams,  
breakthrough to each of us.

Unite us in your vision,  
equip us for your work.

Transform us by your song,  
create our harmony.

May we embrace your future  
and be your loving church.

**Amen.**



United  
Women  
in Faith



## CRAFT FAIR SATURDAY NOVEMBER 1ST 10AM TO 2PM

Come out and support local businesses and get a head start on your holiday shopping. Walker Jewelry will be there on Saturday and Sunday morning before and after church. If you are someone you know is still interested in a table please contact Toni Locke at [toni@ggrreegg.com](mailto:toni@ggrreegg.com)

## UWF BAKE SALE SUNDAY DECEMBER 14TH

Enjoy the Christmas Pageant and then stock up on holiday treats. Choose from a variety of cookies, breads, and other tasty treats. Cookies are .50 cents each and other items are priced as marked. We accept cash, checks and Venmo. We are also accepting donations of baked goods which can be dropped off at church Saturday December 13th from 10am to 2pm or before church on Sunday. Walker Jewelry will also be there. Please contact Toni Locke at [toni@ggrreegg.com](mailto:toni@ggrreegg.com) with any questions.

## Worship on Sundays at 9:30 am

⇒ In-Person Worship  
in the Sanctuary

⇒ Online Worship  
<http://youtube.com/richfieldumc>

⇒ By touch tone phone at  
1.888.650.5835

## CHURCH AND SOCIETY

### WOVEN SLEEPING MATS OUR MINISTRY BEGINS

Our ministry of upcycling plastic shopping bags by weaving them into sleeping mats for people who are displaced from their homes is seeing a lot of participation. Thank you.

Here is how you can take part:

**WEAVE** - the loom is on a table in the corner of the commons area. Whenever you are at the church you are welcome to weave a row or two or ten!

- Each “stitch” includes 2 long strands (warps).
- When starting a new row, include the metal rod (it keeps the width even).
- Pull your knots firm/tight so that the knot can be tucked in.
- Use the potato mashers to pull each row tight against the previous rows.

**BAG PREP** - the loops used for the weaving are cut from plastic shopping bags. The preparation can be done at church, or you can take home a bunch of bags and bring back loops.

- Separate bags/loops by color
- You can cut one bag at a time or several bags at once, depending on your preference
- Smooth the bag flat
- Cut across the bag about an inch from the bottom (removing the bottom seam)
- Cut across the bag about an inch below the handles
- Cut across the remaining rectangle in half to create two loops (about 4”-6” wide)

**BAGS** - it takes several hundred bags to create a single mat. Keep bringing them in.

- Clean bags from Target, Walmart, Cub, Dollar Store, pretty much any average weight shopping bag, will work.
- Colored bags add interest.
- We cannot use produce bags (too lightweight), newspaper bags (wrong shape) or very heavy bags.

**WORK TIMES** - join the fun as we set times to come by and spend some time on the project.

- Sundays before and after worship
- New: Wednesdays 6:30-8 pm, starting September 3
- Work independently anytime the church is open; Tuesdays to Thursdays from 9 - 3.

Questions - contact Gail Johnson 612-250-1736



### CHRISTMAS EVE OFFERING MISSION RECIPIENT

The Church and Society Team has selected Small Sums as our mission partner Christmas Eve offering recipient. Small Sums outfits people experiencing housing instability with the clothing, shoes, and tools they need to start and keep a new job. Our generosity will help new neighbors gain stability faster, make resources last longer, and improve lives in holistic ways. More information to come.



### THANK YOU: VEAP FALL DRIVE RESULTS

We had a tremendous turnout for our hygiene product drive for our partner, VEAP. Church members, Caring for Children families, and neighbors brought 1,263 lbs. of hygiene products to the donation depot, amazing! Thank you to the many who sorted the products and brought them to VEAP together in the church bus. God does amazing things with and through us when we work together!

## THANK YOU: HALLOWEEN COSTUME DRIVE RESULTS

It was our first time trying a Halloween costume drive and we had a good experience and learned for next year. We received around 75 costume donations and gave away approximately half to dozens of families from the neighborhood. Thank you for your donations, and special thanks to Sharon Hall and Betty Klint for keeping us organized and hosting the event. See you next year!



## THANK YOU: RICHFIELD ROAD TRIPS

It was such fun to take the church bus out to Lakewood Cemetery and Luther Seminary for engaging tours, beautiful architecture, powerful stories, and good community. Where will we go next?



## THANK YOU: GAME NIGHTS

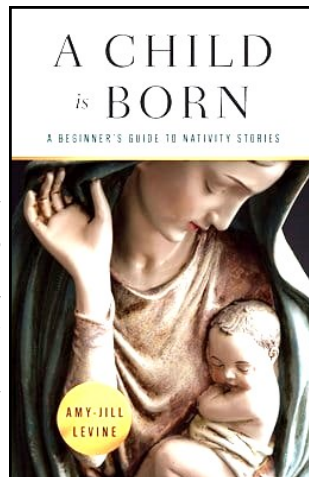
What a blessing to have church members and neighbors mingle at Game Nights and Dungeons & Dragons for Teens this fall. Thanks to all who attended, especially Becca Whitaker and Lyra Olson for being our Dungeon Masters!



## ADVENT STUDY WITH BISHOP LANETTE PLAMBECK

Mondays in December  
at 7:00 pm, online-only

United Methodists across the Dakotas and Minnesota will discuss *A Child is Born* by Amy-Jill Levine. Dive into Bible to reveal how prophets foreshadow and enrich the timeless Christmas story. Levine shows readers how Scripture's earlier birth stories anticipate the story of Jesus's birth and how His birth resonates and gives new meaning to those earlier stories. Copies available wherever books are sold. The Zoom link will be provided to those who have registered as the first discussion draws near. Register at <https://mnumc-reg.brtaapp.com/AdventChild25>



## GROW THE REACH OF YOUR CHURCH

**SIGN-UP FOR, OR RESUBSCRIBE TO, THE CHURCH EMAIL LIST.** Get [your church's weekly email updates](#). Get the latest for worship, news and events, photos and videos, funerals and memorials, and more. Help your church go from 300 to 305 subscribers.

### ENGAGE YOUR CHURCH ON OUR FACEBOOK PAGE.

Interact with [your church's Facebook page](#). Like, comment, and share church's items. "See First" in your News Feed and "Turn On" Notifications. Help your church grow from 620 followers to 625.

### ENGAGE YOUR CHURCH ON OUR YOUTUBE CHANNEL.

Engage with [your church's YouTube channel](#). Subscribe, like, and share videos with friends. Help your church grow from 400 to 405 subscribers.

## SEASONS OF SONG WITH THE RUMC CHANCEL CHOIR

Greetings, RUMC Community! First and foremost, I want to offer up a heartfelt THANK YOU for your warm welcome back to the Interim Chancel Choir Director position for these final four months of 2025. Last spring turned out to be nothing short of an extraordinary experience with the group, and it has been an honor and pleasure to have another opportunity to work with this amazing ensemble of singers and musicians!



Throughout this fall, it has been our intent to bring a wide array of new and familiar repertoire selections to worship that are meaningful, engaging and enjoyable. We look to continue that journey as we move into Advent at the end of November, savoring the countless gifts of music during the Season of Lights and following the Christmas Story together in community.

In that light, we hope you can join us in-person or online for a special **Lessons & Carols worship service on Sunday, December 21**, at 9:30 am led by the Chancel Choir, string quartet, organ, piano, others...and you - the RUMC congregation! We'll then gather once again to celebrate the birth of the Christ Child on Christmas Eve, Wednesday, 12/24 at 4 pm, concluding with the traditional "Silent Night" candle lighting ceremony. We hope you can join us for this lovely tradition.

Also, as the seasons change, we wanted to take a moment to remember the extraordinary life of Curt Stull, who served as a beloved member of the RUMC music community for many years, including his time as director of the Chancel Choir. Curt's gift of song and generous spirit will long be remembered, and we are grateful to Curt's family for the opportunity to sing at his memorial service. *"Well done, good and faithful servant."*

Thank you again, friends, for your continued support and encouragement of the Chancel Choir, and I look forward to more great music in the weeks ahead!

Peace to you and yours,  
Dave



## WHAT IF SOMEONE ASKS ME FOR MONEY AT THE CHURCH?

Richfield UMC does not offer immediate direct financial assistance. On rare occasions, a person comes to campus and asks for money or other assistance during worship. If someone approaches you for this kind of help, you are encouraged to kindly decline. It is also appropriate to tell them we do not have immediate financial assistance and that it isn't appropriate for them to ask other people there. You can also inform an usher or clergy if you need additional help.

As a church, we *want* to help people, *and* we *need* to help in ways that are safe and sustainable. Your church partners with vetted and evaluated local organizations and within the worldwide UMC denomination to share compassion and justice outreach. This approach gives the church opportunities to practice priority thinking, act with integrity, and maintain missional alignment with causes. On our website, we have a list of resources for immediate assistance, including food, meal delivery, rent and housing, and mental health resources: [richfieldumc.org/help](http://richfieldumc.org/help).

## YOU KEEP US WORSHIPPING ON SUNDAYS

Many people keep us going as volunteers already. You can step up and make a difference, too.

**Keep us caffeinated.** Clean up coffee after worship and fellowship time. Contact Wayne Johnson.

**Keep us welcoming.** Greeters are the first point of contact for new guests and longtime members when they arrive for worship. Contact Mick and Marlys Hudson.

**Keep us prayerful.** Liturgists read scripture, serve Holy Communion, and write and deliver Prayers of the People. Contact Rev. Nate Melcher

**Keep us accessible.** Tech Crew aim cameras, add sound, and move slides. Contact Rev. Bill Johnson.

**Keep us organized.** Ushers hand out bulletins and other hospitality items. Contact Wayne Johnson.

**Keep us learning.** Sunday School teachers care for kids, read Bible stories, and lead activities. Contact Becca Whitaker.



## 2025 YEAR-END GIVING

As another year ends, please remember to make your 2024 online contributions by **Friday, December 26, 2025**. This provides enough time to be received by the bank and avoids any processing delay due to the holidays. Use your electronic giving option by going to the church website: [richfieldumc.org/give](http://richfieldumc.org/give).

With the uncertainty of the U.S. Postal Service, please allow enough time for the business office to receive your mailed contributions, preferably by **Monday, December 29, 2025**.

Please contact Kathy Gertsema if you have any questions.  
[kgertsema@richfieldumc.org](mailto:kgertsema@richfieldumc.org) or 612-861-6086



## ONGOING OPEN GROUPS

**Women Who Read (WWR)**  
**1st Mondays of the Month**  
**1:30-3:00 pm, online by Zoom**

To join by Zoom, email Fern at [wfalbertson@gmail.com](mailto:wfalbertson@gmail.com)

If you are a woman who enjoys good books and thoughtful discussion, then consider joining fellow readers for Women Who Read. The books to read and discuss for the final months of 2025 are:

November James: A Novel by Percival Everett  
December The Guncle by Steven Rowley

**Women's Bible Study**  
**Tuesdays, 9:30-11:00 am**  
**Online by Zoom or phone**

Please contact our Zoom Coordinator, Molly, at [mollyreko@comcast.net](mailto:mollyreko@comcast.net) or 612-270-4700, or leader, Rev. Ruth Phelps at 952-929-1595.

There is plenty of food for thought in scripture, for as old as the scriptures are, they are alive with truth for these days.

**Men's Bible Study**  
**Wednesdays at 9:00 am-10:00 am**  
**Hybrid: Grace Room and Zoom** Meeting ID: 819 9039 0338/Passcode: 5835 or call: (312) 626-6799

Read and discuss scripture for upcoming sermons. Meet in-person and get a cup of coffee or come online. For the latest updates, contact Pastor Nate to be on the email list for frequent participants.

## HANDS-ONLY CPR/AED REFRESHER TRAINING SESSION

**Wednesday, November 5**

**10:30 am - 12 noon, at church**

**RSVP: Sign up in the Commons or call the church office by Sunday, November 2**

**There is no cost for this refresher training session.**

Every year, more than 350,000 Americans experience Sudden Cardiac Arrest, when the heart stops beating without any warning. During cardiac arrest, the heart cannot pump blood to the rest of the body, including the brain and lungs. Death can happen in minutes without treatment. Cardiopulmonary resuscitation (CPR) is an emergency procedure that can help save a person's life if their breathing or heart stops. If performed immediately, CPR can double or triple the chance of survival from an out of hospital cardiac arrest. CPR uses chest compressions to mimic how the heart pumps. These compressions help keep blood flowing throughout the body.

The more we can prepare and train for emergency situations, the safer our church community will be for us all. Please come and learn both hands-only CPR and how to use our automated external defibrillator (AED). The speaker will talk about Sudden Cardiac Arrest (SCA), the difference between SCA and a heart-attack, recognizing SCA, calling 9-1-1, performing hands-only chest compressions (adult and teen), and what an AED is and how it works.

Our speaker is Renee Hamdorf who is currently the Heart Safe Communities Coordinator of Allina Health. She is a retired Firefighter/EMT of 16 years and has been a CPR/EMT instructor for 25 years. Renee has performed CPR many times, and her goal in teaching is to prepare a lay-rescuer to be comfortable in saving their loved one if ever put in a position to do so.

**You do not need a special certification or formal training to perform CPR, but you do need education. If cardiac arrest happens to someone near you, do not be afraid --- just be prepared! Join us!**

## RUMC LIBRARY NEWS

The Twin Cities Area Church Library Association met recently. One of our speakers talked about our living in what has been called an Attention Disruption Era. That is, in a generation of memes, quick posts on social media, brief news bites for or by the press, and political jargon, persons may not have the persistence of attention needed to read even an average sized book (and knowing that can vary according the types of interests one has). I had not heard the phrase, A.D.E., before. But, it made me think that stepping into our church library may be a breath of fresh air in the world of boxed-in, keep-on-moving, thoughtless communications with which we live. We have tried to make the library a place of quality attention in the areas of faith, justice, and joy. So, whether you like a good biography, fine fiction, cultural insight, religious inquiry and discovery, or more, step into the library and take a good deep breath, and then look into the areas of your interest with non-disrupted attention.

And, two other items of note: After the 2024 General Conference which finally revised much of the punitive policies of our world-wide United Methodist church, particularly with regard to LGBTQ+ persons, the new Book of Discipline (The official UMC policy book) has been published. A copy has been obtained and will shortly be prepared for placement on the top shelf of the library section closest to the office windows. Those of you interested in its changes may look for it there. Secondly, thanks to Marilyn Dodge, Susan (SK) Johnson, Kathy Clem, and Curtis Pratt for recent donations to our materials. Please give them your thanks for adding to the possibilities of our fulness of attention.

Rev. Wayne Albertson

## DEAR RUMC CONGREGATION

My name is Shruthi Rajasekar and I am a Minnesotan composer and singer. I was a recipient of the Groth Scholarship from 2014-2017, which supported me throughout my undergraduate degree in music from Princeton University. I went onto be a Marshall Scholar in the UK for postgraduate studies in music, and I now work as a professional classical musician - which was a path possible to me thanks to the support of the Groth Scholarship. I am so grateful to have been part of this community and to have sung in your church services each summer!

Warmly,  
Shruthi Rajasekar

*Shruthi recently had a special concert of her large work Sarojini, about the Indian Independence Movement through the eyes of poet Sarojini Naidu. It received its first North American performance right here in Minnesota.*

*The concert was in October and was held at the Ted Mann Concert Hall. It was performed by VocalEssence, the Metropolitan Symphony Orchestra, and world-renowned Indian classical musicians Nirmala Rajasekar and Thanjavur K. Murugaboopathi.*



## PILL BOTTLE COLLECTION

I want to thank everyone for continuing to bring their clean, amber pill bottles to the basket by the church entrance. We collect them, check them and sort them into 1 gallon plastic bags. They are shipped to a warehouse in Ohio. When they ship medical equipment to hospital ministries around the world the empty spaces in the containers are filled with these bags.

-Rev. Kent Johnson



NON-PROFIT  
US POSTAGE PAID  
TWIN CITIES MN  
PERMIT NO. 91532

Date Sensitive Material

Return Service Requested

5835 Lyndale Ave S.  
Minneapolis, MN 55419  
612-861-6086 office  
rumc@richfieldumc.org  
www.richfieldumc.org

# Heartline

Keeping in touch with the heart of the  
Richfield United Methodist Church faith community.

### 2025 Christmas Poinsettia Donation Form

The Christmas tradition to adorn the church with poinsettias is made possible by generous donations from the RUMC community. You are invited to honor your loved ones by giving towards the flowers that will beautify the church for this year's Christmas celebration. As in previous years, the practice of having the loved ones you are honoring listed in the bulletin will continue. At the conclusion of the 4:00 pm Christmas Eve worship service, if you wish, you may take a plant of your choosing.

The suggested donation is \$18.00, but a donation of any amount will be accepted to defray the cost of the flowers. Please make checks payable to Richfield United Methodist Church with "Christmas Flowers" in the memo.

**Please return the form with your payment by Sunday, December 7, 2025** to ensure the loved ones you are honoring are listed in the bulletin.

Amount enclosed: \$ \_\_\_\_\_

Please mark and print dedication:    memory of    honor of    celebration of

\_\_\_\_\_  
\_\_\_\_\_  
\_\_\_\_\_

Your Name: \_\_\_\_\_ Phone: \_\_\_\_\_